

Model 555 Vibration Switch with BAL602 Remote Sensor

Features:

Monitors Vibration Acceleration (g's), Velocity (in/sec) or Displacement (mils) - user selectable
110 - 130 VAC or 24 VDC - user selectable
6 Full Scale Range Settings - user selectable
10 Limit Set Point Settings - user selectable
Adjustable Time Delay
Remote Reset Button, Latching and Non-Latching Operation
4-20mA Output (Connects to PLC's, DCS, SCADA Systems and Panel Meters)
Mute Function
Remote Sensor and Connector - BAL602 - water tight,
100 mV/g Accelerometer
Water-tight Accelerometer Cable

Applications

Fans, Cooling Towers
Motors, Pumps
Blowers, Compressors
Rotating Machinery Monitoring

Specifications:

FULL SCALE RANGES: Acceleration: Low = 0.3 g's High = 3.0 g's
Velocity: Low = 0.3 ips High = 3.0 ips
Displacement: Low = 3.0 mils High = 30 mils

LIMIT SETPOINTS: 10 to 100% of Full Scale

FREQUENCY RANGE: Accel: 2 to 1000 Hz (120 to 60,000 RPM)
Vel: 2 to 1000 Hz (120 to 60,000 RPM)
Disp: 10 to 1000 Hz (600 to 60,000 RPM)

TIME DELAY: 3 to 30 seconds (user adjustable)

INPUT POWER: 110-130VAC, 50/60 Hz., or 22-28 VDC
150mA supply. 190-250 VAC (optional)

LIMIT OUTPUT: Form-C Relay SPDT
5A @ 125 VAC; 5A @ 28 VDC

ANALOG OUTPUT: 4 - 20 mA DC. Optional remote panel meters available (P/N - A11347)

TEMPERATURE: 32°F to 158°F (0°C to 70°C)

TERMINALS: Accepts #18 AWG wire

INPUT: Low Profile, Industrial Accelerometer (100 mV/g)
Acceleration Range 80 g Peak



LATCHING OPERATION: An open circuit maintains (latches) the limit relays.

NON-LATCHING OPERATION: A jumper between latch and common terminals is supplied for non-latching operation.

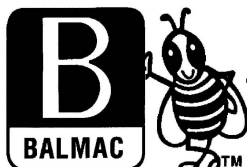
REMOTE RESET SWITCH: Manually depressing button closes circuit between latch and common terminals to reset limit. (Optional)

MUTE: Circuit closure between MUTE and COMMON disables limit.

MODEL 555 - KIT- A (Includes)
Model 555 Vibration Switch
Model 602 Low Profile, General Purpose Accelerometer
Model 030-25 (25') Pickup Cable with Connector
P/N 924-157 Fiberglass Window-Style Enclosure NEMA 4X.
Size: 6"x 6"x 4" (152x152x102 mm).

WEIGHT:
Model 555 Kit-A 7.0 lb (3.17 kg)

MOUNTING: 1/4" hardware 4 mounting bosses



BALMAC INC.
8205 Estates Pkwy, Ste N
Plain City, OH 43064-8080 USA

Telephone: 614-873-8222
Email: sales@balmacinc.com

balmacinc.com

FULL SCALE RANGES: ACCELERATION: LOW = 3 g's, HIGH = 3.0 g's
 VELOCITY: LOW = 0.3 ips, HIGH = 3.0 ips
 DISPLACEMENT: LOW = 3.0 mils, HIGH = 30 mils

LIMIT SETPOINTS: 10 TO 100% OF FULL SCALE

FREQUENCY RANGE: ACCELERATION: 2 TO 1000 HZ (120 TO 60,000 RPM)
 VELOCITY: 2 TO 1000 HZ (120 TO 60,000 RPM)
 DISPLACEMENT: 10 TO 1000 HZ (600 TO 60,000 RPM)

TIME DELAY: 3 TO 30 SECONDS (USER ADJUSTABLE)

INPUT POWER: 110 - 130 VAC, 50/60 HZ
 190 - 250 VAC, 50/60 HZ (OPTIONAL)
 22 - 28 VDC, 150 mA

LIMIT OUTPUT: FORM-C RELAY SPDT, 5A @ 125 VAC; 5A @ 28 VDC

ANALOG OUTPUT: 4 - 20 mA DC. OPTIONAL REMOTE PANEL METERS
 AVAILABLE (P/N - A11347)

TEMPERATURE: 32°F TO 158°F (0°C TO 70°C)

TERMINALS: ACCEPTS #18 AWG WIRE

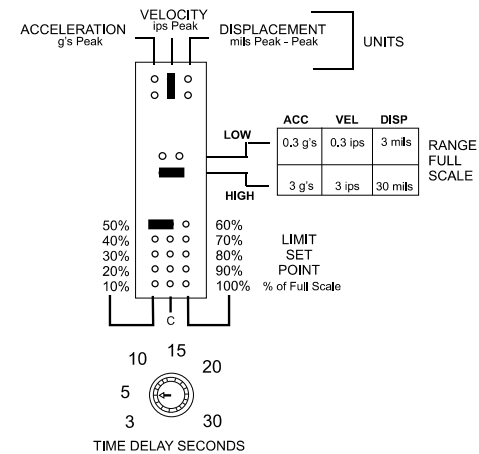
LATCHING OPERATION: AN OPEN CIRCUIT MAINTAINS (LATCHES THE LIMIT RELAYS)

NON-LATCHING OPERATION: A JUMPER BETWEEN LATCH AND COMMON TERMINALS IS SUPPLIED FOR NON-LATCHING OPERATION

REMOTE RESET SWITCH: MANUALLY DEPRESSING THE TOGGLE SWITCH CLOSSES CIRCUIT BETWEEN LATCH AND COMMON TERMINALS TO RESET LIMIT (OPTIONAL)

MUTE: CIRCUIT CLOSURE BETWEEN MUTE AND COMMON DISABLES LIMIT

ENCLOSURES: FIBERGLASS W / CLEAR FRONT PANEL
 NEMA 4, 4X, 12, 13. WATER AND DUST TIGHT.
 SIZE:



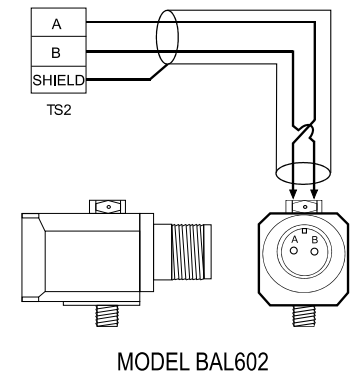
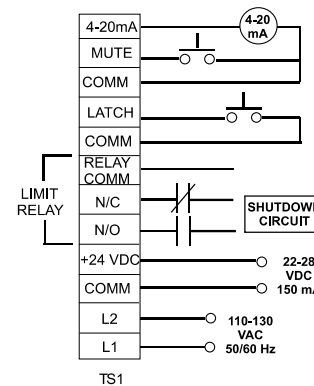
SETUP EXAMPLE

Step 1: Set UNITS Jumper to ACCELERATION, VELOCITY or DISPLACEMENT. Example = VELOCITY.

Step 2: Set RANGE FULL SCALE Jumper. Select LOW for low amount, select HIGH for high amount. Example = HIGH.

Step 3: Set LIMIT SET POINT Jumper. Example = 50% of RANGE 3 ips = 1.5 ips VEL.

Step 4: Turn LIMIT TRIP TIME DELAY SECONDS Knob. Example = 5 SECONDS.



MODEL	555
USED ON	
CUSTOMER	
DWG DATA	

A	Production Release.	5/15/12
REV.	DESCRIPTION	DATE
SCALE	NOT TO SCALE DWG	
TOLERANCES UNLESS OTHERWISE SPECIFIED DIMENSION FRACTION DECIMAL		www.balmacinc.com
TITLE		
MODEL 555 SPECIFICATIONS & SAMPLE WIRING		
DRAWING NO.		A-12555009
DRAWN BY	S. Crow	DATE 5/15/12
CHECKED BY	B. Cline	DATE 5/15/12